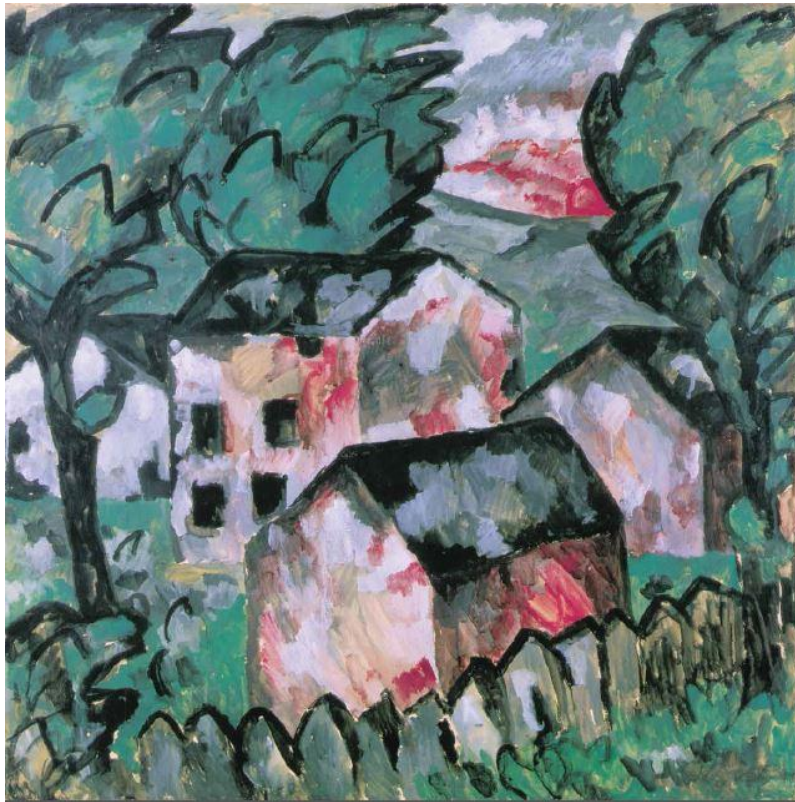


CHRISTIE'S

PRESS RELEASE | LONDON
FOR IMMEDIATE RELEASE | 16 APRIL 2018

KAZIMIR MALEVICH *LANDSCAPE* TO STAR IN CHRISTIE'S *IMPRESSIONIST AND MODERN ART EVENING* *SALE* 20 JUNE 2018



Kazimir Malevich, *Landscape*, 1911,
gouache on paper laid down on board, 41 3/4 x 41 3/4 in. (106 x 106 cm.)
Estimate: £7,000,000-10,000,000

London – Kazimir Malevich's *Landscape* (1911, estimate: £7,000,000-10,000,000) will be a major highlight of Christie's *Impressionist and Modern Art Evening Sale* on 20 June 2018, part of '20th Century at Christie's', a series of auctions taking place from 15 to 21 June 2018. The monumental, square-format landscape is from 'The Red Series', a group of works characterised by gestural brush

strokes and an expressive use of colour, referencing both Fauvism and Cubism, and anticipating Malevich's move towards Suprematism.

Landscape was first exhibited in the 'Moscow Salon' in February / March 1911. It was subsequently shown the following year in St. Petersburg as part of 'The Union of Youth', where Malevich represented a radical collective known as 'Donkey's Tail'. In 1927, he was invited to Germany to show his work for the first time outside Russia and brought with him the best works of his career to date. *Landscape* was one such work and remained in Berlin after Malevich returned to Russia. Due to the rise of totalitarianism in Germany and in his home country, the artist lost control of his works abroad before he died in 1935. *Landscape* resurfaced after the war and was acquired by the Kunstmuseum Basel, where it hung for over 50 years, before being restituted to the heirs of the artist. It is now being offered from a private collection and represents the first time that work has come to auction in two generations. *Landscape* will be exhibited in London from 15 to 20 June 2018.

Landscape is a 'pure' landscape painting whose motif of peasant dwellings surrounded by stylized treetops is borrowed from Russian primitive art. The use of colour to sculpt the forms represented recalls the techniques employed by Cézanne, while the block-like depiction of the buildings nods towards the Cubist compositions of Braque and Picasso. By distilling these diverse visual references, Malevich has created a powerful and profoundly unique work of art. He himself stated that 'one was obliged to move both along the line of primitive treatment of phenomena, and along the line of Cézanne to cubism.' The red-hot gleam on the horizon is a direct depiction of the sun, one of the unique features of the painting that foretells the primacy of colour that would define Suprematism. In the early 1930s, Malevich returned to creating 'pure' landscapes, producing *Landscape with five houses*, *Landscape with a white house*, and *Red House*, all of which are in the collection of the State Russian Museum.

Jay Vincze, Senior International Director, Impressionist and Modern Art, Christie's: "Malevich was one of the most dynamic Russian Avant Garde artists whose continual strive to redefine the pictorial plane resulted in an incredibly varied and ultimately hugely influential body of work, most of which is to be found in public institutions around the globe. This early landscape shows the artist absorbing the lessons of his European counterparts while moving in a wholly unique direction, towards what would become his most significant and radical style – Suprematism. We are honoured to present such a rare work to auction for the first time at Christie's in London."

PRESS CONTACT:

Sara Macdonald | +44 207 752 3136 | saramacdonald@christies.com

About Christie's

Christie's, the world's leading art business, had global auction, private and digital sales in 2017 that totalled £5.1 billion / \$6.6 billion. Christie's is a name and place that speaks of extraordinary art, unparalleled service and expertise, as well as international glamour. Christie's offers around 350 auctions annually in over 80 categories, including all areas of fine and decorative arts, jewellery, photographs, collectibles, wine, and more. Prices range from \$200 to over \$100 million. Christie's also has a long and successful history conducting private sales for its clients in all categories, with emphasis on Post-War & Contemporary, Impressionist & Modern, Old Masters and Jewellery.

Alongside regular sales online, Christie's has a global presence in 46 countries, with 10 salerooms around the world including in London, New York, Paris, Geneva, Milan, Amsterdam, Dubai, Zürich, Hong Kong, and Shanghai.

**Please note when quoting estimates above that other fees will apply in addition to the hammer price - see Section D of the Conditions of Sale at the back of the sale catalogue.*

**Estimates do not include buyer's premium. Sales totals are hammer price plus buyer's premium and are reported net of applicable fees.*

###

Images available on request

FOLLOW CHRISTIE'S ON:

